

# JMF

*Herefords & SimAngus*

*Private Treaty*

**2024 BULL OFFERING**

PROUD TO SERVE THE  
*commercial cattleman!*



# Reference Sires



**MESA 612D**

Reg # 43739299 | DOB: 3/1/16

**HICKOK 15X x FHF 9116 POLLY 66Z**

Mesa has been our choice to push on with the Hickok influence. His progeny are soft made, and very functional. Mesa is admired for his foot structure and length.



**COWMAN 735D**

Reg # 43756519 | DOB: 2/13/16

**TH 122 71I VICTOR 719T x RANGELINE 327X VICTORIA 750B**

Foundation sire. We can't say enough about Cowman! His bulls have been very sought after by our customers. The daughters are highly productive in the JMF cowherd.

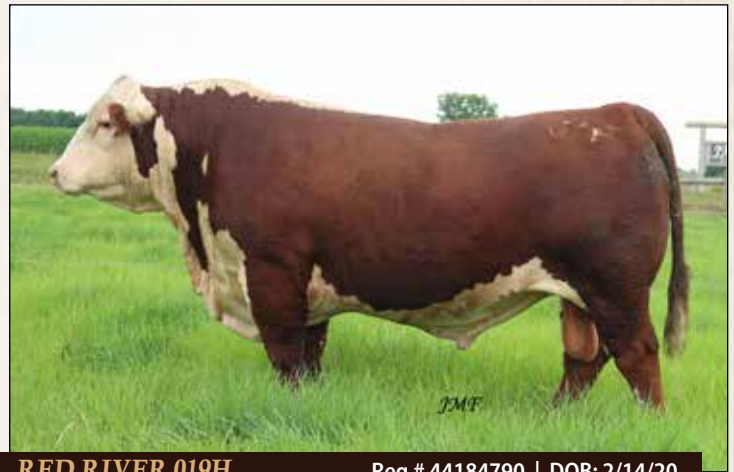


**HICKOK 15X**

Reg # 43102635 | DOB: 3/27/10

**THR THOR 4029 x FHF 10H VICTRA 31S**

Foundation sire. Hickok has been one of the most influential bulls we have had the privilege to own. With his tremendous amount of guts and power, he has made a huge impact on the JMF program.



**RED RIVER 019H**

Reg # 44184790 | DOB: 2/14/20

**COWMAN 735D x JMF 15X LADY CALAMITY 517C**

A bull we are very fond of in terms of softness, maternal, and fleshing ability. We are very excited to see what the future holds for Red River. His granddam, 94T, who was one of our main foundation females, ended her career at 16 years of age this past summer.



**COWBOY 924G**

Reg # 44070849 | DOB: 3/1/19

**COWMAN 735D x FHF 15X JUDI 148A**

Cowboy is one of the Cowman sons we have sampled. He is full of maternal and calving ease. Dam is the 148A Hickok daughter who has been a very productive cow for us.



**CATTELMAN 111J**

Reg # 44301305 | DOB: 2/9/21

**COWBOY 924G x JMF 612D MISS LILY 121A 939G**

Moderate framed, thick muscled bull by 924G. The maternal side is from the 121A cow family. Heavy milking, deep ribbed cows that work hard and bring in big calves.





**304L**



Find us on Facebook!  
@ JMF Herefords and SimAngus



Lady 94T, granddam of 304L

**JMF 924G CATTLEMAN 051H 304L**

AHA # 44489180    DOB: 1-1-23    ACT. BW: 62    ADJ. WW: 643    S

**Sire:** TH RANGLINE 719T VICTOR 735D  
**JMF 35D COWBOY 148A 924G**  
FHF 15X JUDI 148A  
CF HAYES DOMINO 639

**Dam:** JMF 639 MS. HAYES 94T 051H  
FHF 343 NATE'S LADY 94T



CE	7.7
BW	-0.3
WW	37
YW	55
MILK	23
M&G	41
SC	0.9
FAT	0.001
REA	0.14
MARB	0.13
BMI	383
CHB	102

**SCURRED**

A nice heifer bull option in 304L. He is a very moderate, easy fleshing type that should leave beautiful daughters. His grandmother, Lady 94T, is one of our matriarch foundation females coming from Frederickson Ranch. Dam age: 4.

**Candidate for heifers!**

EPD's top 6% Birth Weight, 11% Teat size, 16% Calving Ease, 24% Udder quality, 32% Maternal Calving Ease, 35% Baldie Maternal Index.

**JMF 15X WILD BILL 030H 307L**

AHA # 44489184    DOB: 1-1-23    ACT. BW: 85    ADJ. WW: 752    S

**Sire:** THR THOR 4029 {CHB, SOD}  
**FHF 4029 HICKOK 15X**  
FHF 10H VICTRA 31S {DOD}  
PYRAMID SUNDANCE 7148

**Dam:** JMF 7148 GILLETTE 136B 030H  
FHF 10Y VICTRA 136B

CE	5.7
BW	2.8
WW	59
YW	87
MILK	29
M&G	59
SC	1.4
FAT	0.011
REA	0.46
MARB	0.20
BMI	352
CHB	121

**SCURRED**

307L's mother is a cherry red, goggle eyed with a gorgeous, tight, small teated udder. Dam age: 4.

EPD's top 7% Udder quality, 11% Teat size, 13% Scrotal Circumference, 26% Marbling, 29% Calving Ease and Maternal Calving Ease.



307L's dam, 030H, with her new Houston heifer calf



**307L**





309L

JMF



Dam of Distinction 128A, granddam of 309L



309L and his Hickok dam, 105J, on pasture in early June

## JMF 35D COWBOY 105J **309L**

AHA # 44489188    DOB: 1-9-23    ACT. BW: 84    ADJ. WW: 732    P

*sire:*

TH 122 711 VICTOR 719T {SOD}  
**TH RANGELINE 719T VICTOR 735D**  
 RANGELINE 327X VICTORIA 750B {DOD}



*dam:*

FHF 4029 HICKOK 15X  
**JMF 15X CALAMITY 128A 105J**  
 FHF X337 VICTRA 128A {DOD}

CE	8.9
BW	1.1
WW	47
YW	76
MILK	29
M&G	52
SC	1.5
FAT	0.051
REA	0.18
MARB	-0.08
BMI	382
CHB	67

### HOMO POLLED

One of our favorite bulls in the line up! We say it every year, but again want to express how we like our "signature mating" of a Cowman x Hickok. 309L's mother is a smooth made, tightly uddered 1st calf heifer. When 105J calved, she was very attentive. She acted more like a mature cow calving. She talked to her calf while she cleaned him off vigorously. 105J nudged the calf up and got him nursing right away. I mention these things because they don't make an EPD for it, and for us it coincides with our everyday cattleman logic of the cow doing her job well and unassisted. 309L's granddam, 128A, has paid for herself many times over. Good cow family to incorporate. Dam age: 3. **Candidate for heifers!**

EPD's top 7% Udder quality, 9% Scrotal Circumference, 11% Calving Ease and Teat size, 12% Maternal Calving Ease, 17% Birth Weight, 36% Baldie Maternal Index.

**WE EXPECT OUR COWS TO WORK FOR A LIVING.**

They must be functional, maintenance free,  
 sound footed, and easy fleshing.

- Jared and Makayla Flower





311L

## JMF 664A DUKE 810F 311L

AHA # 44489190    DOB: 1-11-23    ACT. BW: 90    ADJ. WW: 709    P

■ *sire:* KILMORLIE DELIVERANCE ET 80U {SOD}  
**SQUARE-D COURIER 664A {SOD}**  
 SQ D S DOMINETTE 964M  
 TH RANGELINE 719T VICTOR 735D  
 ■ *dam:* **JMF 35D COWGIRL 89Z 810F**  
 FHF 15X RITA 89Z

### POLLED

Old time pedigree in this "Duke" 664A son. Duke himself left us with so many beautiful daughter in the 1990's. I wanted to bring back something super functional, homo polled, and also proven outcross genetics. The 311L bull should add depth of rib and softness to his calves. Dam age: 5.



020H, maternal brother to 311L

CE	2.6
BW	3.1
WW	47
YW	73
MILK	25
M&G	49
SC	0.7
FAT	0.011
REA	0.19
MARB	0.12
BMI	358
CHB	117



320L

## JMF 7301 PIONEER 902G 320L

ASA # 4241159    DOB: 1-15-23    ACT. BW: 87    ADJ. WW: 710    P

■ *sire:* S A V FINAL ANSWER 0035  
**S A V PIONEER 7301**  
 S A V BLACKBIRD 5297  
 ES AUTHORITY EA117-2  
 ■ *dam:* **JMF 1127 MISS AUTHORITY 902G**  
 JRA NEW UPGRADE 412B

### 1/2 SIMMENTAL, 1/2 ANGUS - HETERO BLACK, HOMO POLLED

Half bald faced bull out of a really cowy Authority daughter. Dam age: 5.

CE	10.8
BW	0.6
WW	70.7
YW	114.0
MILK	24.3
MCE	4.8
YG	-0.19
MARB	0.19
BF	-0.015
REA	0.75
API	119.3
TI	72.5



342L

## JMF 111J DROVER 716E 342L

AHA # 44496074    DOB: 2-11-23    ACT. BW: 90    ADJ. WW: 658    S

■ *sire:* JMF 35D COWBOY 148A 924G  
**JMF 924G CATTLEMAN 939G 111J**  
 JMF 612D MISS LILY 121A 939G  
 FHF 4029 HICKOK 15X  
 ■ *dam:* **JMF 15X CALAMITY 1224 716E**  
 TTFL MS VICTOR 719T TIME 1224

### SCURRED

If you are looking to make moderate, deep, fleshy cattle - check out 342L! A big testicled bull that combines 121A and 148A cow families - both are cows that have payed a lot of bills! Dam age: 7.

EPD's top 13% Scrotal Circumference, 20% Birth Weight, 25% Baldie Maternal Index, 36% Calving Ease.

CE	4.8
BW	1.3
WW	51
YW	76
MILK	27
M&G	53
SC	1.4
FAT	0.011
REA	0.23
MARB	0.10
BMI	402
CHB	102





345L

## JMF 35D COWBOY 939G 345L

AHA # 44489249    DOB: 2-11-23    ACT. BW: 74    ADJ. WW: 685    P

■ *sire:* TH 122 711 VICTOR 719T {SOD}  
**TH RANGELINE 719T VICTOR 735D**  
 RANGELINE 327X VICTORIA 750B {DOD}  
 JMF 15X MESA 612D  
 ■ *dam:* **JMF 612D MISS LILY 121A 939G**  
 RANGELINE 13U MISS TUNDRA 821A



CE	12.2
BW	-1.1
WW	40
YW	63
MILK	26
M&G	46
SC	1.3
FAT	0.021
REA	0.18
MARB	0.07
BMI	391
CHB	98

### POLLED

A maternal brother to the Cattleman 111J bull. Smooth made, attractive bull. Dam age: 5. **Heifer bull candidate!**

EPD's top 3% Calving Ease and Birth Weight, 20% Scrotal Circumference, 30% Baldie Maternal Index.



366L

## JMF 612D MESA 808F 366L

AHA # 44489284    DOB: 3-7-23    ACT. BW: 84    ADJ. WW: 649    P

■ *sire:* FHF 4029 HICKOK 15X  
**JMF 15X MESA 612D**  
 FHF 9116 POLLY 66Z  
 TH RANGELINE 719T VICTOR 735D  
 ■ *dam:* **JMF 35D COWGIRL 201B 808F**  
 FHF 9116 ACHIEVA 201B



CE	8.2
BW	1.3
WW	47
YW	70
MILK	22
M&G	46
SC	1.6
FAT	0.031
REA	0.31
MARB	0.10
BMI	388
CHB	109

### POLLED

A maternal brother to our high selling bull in 2023. 366L is the calving ease, heifer bull candidate of the two. Still made similar in type and kind. Take note of a Calving Ease EPD of 8.2! Dam age: 6. **Heifer bull candidate!**

EPD's top 3% Teat size, 6% Scrotal Circumference, 7% Udder quality, 13% Calving Ease, 20% Birth Weight, 32% Baldie Maternal Index.



372L

## JMF 612D MESA 1212 372L

AHA # 44489278    DOB: 3-13-23    ACT. BW: 83    ADJ. WW: 738    P

■ *sire:* FHF 4029 HICKOK 15X  
**JMF 15X MESA 612D**  
 FHF 9116 POLLY 66Z  
 CKP ABOUT TIME 0924 {SOD}  
 ■ *dam:* **TTFL MS FED EX VALUE TIME 1212**  
 SPH CW 10F MS VALUE 5P



CE	4.8
BW	1.2
WW	50
YW	71
MILK	27
M&G	52
SC	1.1
FAT	0.011
REA	0.35
MARB	0.04
BMI	369
CHB	99

### POLLED

The last calf of a 12-year-old cow. Conservatively marked, no white feather on his neck. He is not as high on his Calving Ease EPD as the rest of the heifer bull candidates, but he is made smooth and more refined for heifers. Dam age: 12. **Candidate for heifers!**

Top 19% Birth Weight, 24% Udder quality, 29% Teat size, 36% Calving Ease.