

2-5  
TITE CHIS  
333L

# JMF

Herefords & SimAngus

**10**<sup>th</sup> ANNUAL

# Bull Sale

1:00 PM CST

FEBRUARY 3, 2024 | HOLLOWAY, MN

PROUD TO SERVE THE  
*commercial cattleman!*



# Welcome!

## JMF

Herefords & SimAngus



Hello and welcome everyone to our 10<sup>th</sup> Annual JMF Bull Sale! Thank you for taking some time to look through our offering. It has been quite a year to bring these bulls to you for this sale - from the deep snow, cold and wind of last winter, to the heat and drought from the summer that so many of us in the region dealt with.

Whether you are looking to add performance, maternal traits, or foot structure, we want our product to make a positive impact on your program. We pride ourselves in paying attention to the physical, everyday characteristics of our cattle. How they mother when they calve, how a herd bull handles his group of cows, and how long our cows are lasting in the herd. We like to see our cows turn 10-12 years old and then some. Poor-footed cattle that need assistance to stay in the herd are not tolerated. Nor do we accept poor udders. We base our thinking on selection and management - the same as the customers that are buying the bulls. We expect our cattle to work hard, and again add value. JMF stands behind our product and we appreciate your business!

In the Hereford bulls, you will find a set of Cowman sons that are solid, dark red, and have plenty of guts and flank. We feel the same about the Cowman grandsons and great-grandsons. Cowman turns 8 this year and is still out breeding cows! On another note, we homozygous tested a handful of Hereford bulls this year so look for their results near the footnotes in the following pages.

On the Sim bulls, we really appreciate our S Chisum sons. They are big, bold ribbed bulls that are good footed, with an ample amount of thickness. All of the Sim bulls have been tested for coat color and horn/poled status, so look for those results as well (a few coat colors are still pending but will be ready soon, so check with us if you're looking for that info.)

This year, we will again be offering a set of 2-year-old and 18-month-old fall bulls. They will be semen checked and ready to go on sale day or delivered shortly after. The yearling bulls will remain at JMF and will be developed until April 1<sup>st</sup> free of charge, and we will arrange delivery during the month of April. If other arrangements are needed, please ask us and we would be happy to work with you!

Above all, I would like to take this opportunity to say a huge THANK YOU to my beautiful, hard-working wife, Makayla. She does so much for our operation. Another big thank you has to go out to our kids. All four of them are more and more involved every day. Jaelyn is very good with her cow work, and has started a little herd of her own. She pays close attention to selection and breeding. Tate has been great at running equipment. His next big venture is to begin learning how to weld. Ty and Emerson help out and keep up - Ty is great at finding out all the details that nobody else sees, and Emmy never forgets to bring the snacks!

Contact us any time with questions, we love to talk cattle!

*See you on Sale Day!*

- Jared & Makayla Flower and the JMF crew



[WWW.JMFHEREFORDS.COM](http://WWW.JMFHEREFORDS.COM)



# 10<sup>th</sup> ANNUAL Bull Sale

1:00 PM  
FEBRUARY 3, 2024

At the West Farm, Holloway, MN  
Dinner at Noon, Sale at 1:00 p.m. (CST)

*In the event of bad weather, postponement date is  
Saturday February 10, 2024. Postponement information will be  
available at [www.JMFHerefords.com](http://www.JMFHerefords.com) prior to 8:00 a.m. on February 3<sup>rd</sup>.  
Please call with questions.*

## SALE CONTACTS

Jared Flower ..... 320-413-0483  
Makayla Flower ..... 605-690-6050

## AUCTIONEER

Brad Feuchtenberger ..... 320-287-0501

## TERMS AND CONDITIONS

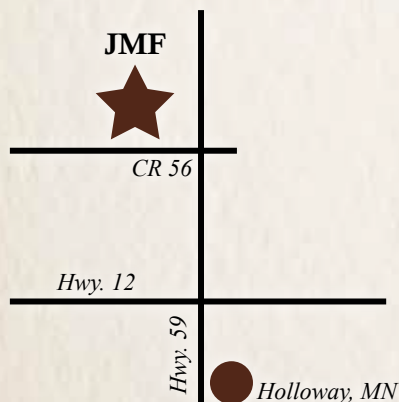
Terms of the sale are cash. All lots are to be paid in full at the conclusion of the sale. Absentee buyers are to pay within 2 weeks of the sale.

## WINTERING, BULL DEVELOPMENT, AND INSURANCE

*JMF would like to develop the yearling bulls until April 1, 2024 at no charge.* By April 1<sup>st</sup>, they will have their semen exam, receive pre-breeding vaccinations, and be ready for pickup or delivery. We do ask that you take possession of your bull(s) at this time. After April 1<sup>st</sup>, yardage will be charged at \$5/head/day. *Aged bulls have already passed their semen exam and we ask that you take possession of these bulls sale day or as soon as possible.* Cattle left at JMF will be at buyers risk immediately following the sale. We strongly encourage buyers to purchase a mortality insurance policy for any animal(s) left to be wintered. Please let us know if you need a contact for insurance and we would be happy to assist you with that.

## DIRECTIONS

Located 4 miles north of Holloway, MN on Highway 59, turn west on County Road 56. JMF West Farm is the first place on the north.



**PLEASE BRING YOUR CATALOG**  
*on Sale Day!*

## GUARANTEE

*All yearling bulls will have passed a breeding soundness exam prior to pickup or delivery on or after April 1, 2024. All aged bulls have passed a breeding soundness exam prior to the sale.* In addition to the standard Terms and Conditions of the American Hereford Association and American Simmental Association, we will provide the first breeding season (the 90-day period immediately following turnout) guarantee on all bulls. This guarantee is not an insurance or mortality policy, but a guarantee on functional fertility. It is not a substitute or replacement for poor management. Buyer assumes all risks for injury due to running bulls together or management decisions outside genetic control. For the guarantee to apply, we ask that you contact us as soon as a condition is observed and before the animal is sold. We will work with you to determine whether the animal is returned or sold for slaughter. We will attempt to provide a suitable replacement. If one cannot be provided of equal or greater value, we will issue a sale credit to be used in a future sale for the full purchase price less the salvage value of the animal.

## SALE FORMAT

The sale offering will sell in an auction format. If interested in a lot(s), sign up to receive your bidder card before the sale starts. Auction will begin at 1:00 pm CST. Each lot will open with the base price that is listed in the catalog. (We are changing our sale format slightly from prior years by adding an auctioneer.) All lots are to be paid in full at the conclusion of the sale.

## BASE PRICES

Base prices are listed for each lot. This is the value the bidding will begin for each animal.

## VIDEOS

Videos on the sale offering are available now at: [www.JMFHerefords.com](http://www.JMFHerefords.com).

*or  
scan  
here!*



## SEMEN INTEREST

JMF will be retaining a 1/3 semen interest on all bulls selling for in-herd use only.

## CANDIDATE FOR HEIFERS

JMF Herefords and SimAngus is calling certain individuals as a "candidate for heifers." This means we have evaluated, to our best ability, to select bulls that we feel you will have the least amount of trouble and the most amount of success in breeding your heifers. However, this is not a guarantee you will never pull a calf out of these bulls or never have trouble. Know your operation and know your cattle while selecting bulls.



## ABSENTEE BIDDING

If you would like to place a bid but are unable to attend the sale, please call us to place a bid or to be on the phone sale day. We will accommodate you in any way we can.

## DELIVERY

Free delivery on all bulls within a 200-mile radius of the sale. In the event you have a further distance to travel, we will assist in the coordination of your animals' delivery.

## FURTHER CONTACT INFORMATION

West Farm Address: 1630 10th Street NW, Holloway, MN 56249  
Email: [jmflower.11@hotmail.com](mailto:jmflower.11@hotmail.com)  
Website: [www.JMFHerefords.com](http://www.JMFHerefords.com)

## PLEASE NOTE

All persons who attend the sale do so at their own risk. Owners assume no liability, legal or otherwise, for accidents or loss of property that may occur.

All announcements made sale day take precedence over the printed catalog.



# Reference Sires



**MESA 612D**

Reg # 43739299 | DOB: 3/1/16

**HICKOK 15X x FHF 9116 POLLY 66Z**

Mesa has been our choice to push on with the Hickok influence. His progeny are soft made, and very functional. Mesa is admired for his foot structure and length.



**COWMAN 735D**

Reg # 43756519 | DOB: 2/13/16

**TH 122 71I VICTOR 719T x RANGELINE 327X VICTORIA 750B**

Foundation sire. We can't say enough about Cowman! His bulls have been very sought after by our customers. The daughters are highly productive in the JMF cowherd.

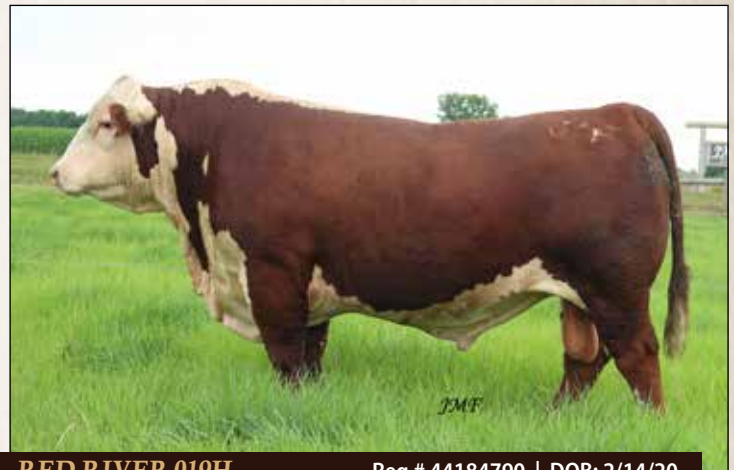


**HICKOK 15X**

Reg # 43102635 | DOB: 3/27/10

**THR THOR 4029 x FHF 10H VICTRA 31S**

Foundation sire. Hickok has been one of the most influential bulls we have had the privilege to own. With his tremendous amount of guts and power, he has made a huge impact on the JMF program.



**RED RIVER 019H**

Reg # 44184790 | DOB: 2/14/20

**COWMAN 735D x JMF 15X LADY CALAMITY 517C**

A bull we are very fond of in terms of softness, maternal, and fleshing ability. We are very excited to see what the future holds for Red River. His granddam, 94T, who was one of our main foundation females, ended her career at 16 years of age this past summer.



**COWBOY 924G** Reg # 44070849 | DOB: 3/1/19

**COWMAN 735D x FHF 15X JUDI 148A**

Cowboy is one of the Cowman sons we have sampled. He is full of maternal and calving ease. Dam is the 148A Hickok daughter who has been a very productive cow for us.



**CATTLEMAN 111J** Reg # 44301305 | DOB: 2/9/21

**COWBOY 924G x JMF 612D MISS LILY 121A 939G**

Moderate framed, thick muscled bull by 924G. The maternal side is from the 121A cow family. Heavy milking, deep ribbed cows that work hard and bring in big calves.



**CHISUM 6175** Reg # 15511451 | DOB: 3/31/06

**S ALLIANCE 3313 X S GLORIA 464**

Chisum has been a bull we have been wanting to use for a while. We finally had the opportunity when we found some semen on him. We are very happy with the Chisum calves. They look identical to him. Big, bold ribbed, moderate and thick.



## 2-YEAR-OLD



246K



821A (we refer to her as 121A), dam of 246K



245K, sold in 2023, twin brother to 246K

### JMF 019H RED RIVER 121A 246K

AHA # 44387478 DOB: 3-20-22 ACT. BW: 74 ADJ. WW: 490\* P

*sire:* JMF 35D COWBOY 517C 019H

TH RANGELINE 719T VICTOR 735D

JMF 15X LADY CALAMITY 517C

TH 605F 63N TUNDRA 513U ET {SOD}

*dam:* RANGELINE 13U MISS TUNDRA 821A

RANGELINE 17N BETSY 13U

**BASE PRICE: \$4,500**  
**POLLED**

A Red River son you can appreciate for his overall design. His mother, 121A, was a top end producer. 121A is also the grandmother to Cattleman 111J. 111J is the sire to the 342L bull on the sale. Dam age: 10.

\*Please take note that 246K is a twin to bull 245K, who was sold in 2023. His mother raised both calves, and she weaned off over 1,000 lbs. of calf with these twins.

EPD's top 7% Birth Weight and Fat, 8% Calving Ease, 11 % Teat Size, 23% Maternal Calving Ease, 24% Udder quality.

|      |        |
|------|--------|
| CE   | 9.7    |
| BW   | 0.0    |
| WW   | 45     |
| YW   | 76     |
| MILK | 27     |
| M&G  | 49     |
| SC   | 0.9    |
| FAT  | -0.009 |
| REA  | 0.20   |
| MARB | 0.02   |
| BMI  | 348    |
| CHB  | 98     |

### JMF 0179 HISTORIC 163G 264K

AHA # 44387500 DOB: 4-23-22 ACT. BW: 75 ADJ. WW: 633 S

*sire:* PYRAMID HISTORIC 0179 ET

NJW 160B 028X HISTORIC 81E ET

FHF 322 RITA 112D

SHF DAYBREAK Y02 D287 ET {CHB}

*dam:* FHF D287 LADY 163G

FHF 3027 LADY 101A



**BASE PRICE: \$4,700**  
**SCURRED**

We have used 264K in our own program. He serviced about 30 cows and we are very excited to see what he can do. At 12 months of age he was settling mature cows. His mother has a beautiful Red River 019H fall heifer calf at side. Herd bull! Phenotype combined with genotype here. Dam age: 4. **Candidate for heifers!**

EPD's top 3% Calving Ease, 3% Birth Weight, 7% Udder quality, 8% Baldie Maternal Index, 11% Teat size, 12% Maternal Calving Ease and Marbling, 25% Certified Hereford Beef, 26% RibEye Area, 27% Milk.

|      |       |
|------|-------|
| CE   | 12.3  |
| BW   | -1.2  |
| WW   | 53    |
| YW   | 83    |
| MILK | 31    |
| M&G  | 57    |
| SC   | 0.9   |
| FAT  | 0.021 |
| REA  | 0.56  |
| MARB | 0.30  |
| BMI  | 448   |
| CHB  | 130   |

## 2-YEAR-OLD



264K



Dad and Emmy getting ready to video another bull!





**K269**



1319, dam of K269, and her 2018 bull calf 802F



802F, sold in our 2019 bull sale, maternal brother to K269

**JMF 019H RED RIVER 1319 K269**

AHA # 44387510 DOB: 9-13-22 ACT. BW: 85 ADJ. WW: 689 P

**sire:** JMF 35D COWBOY 517C 019H  
 TH RANGELINE 719T VICTOR 735D  
 JMF 15X LADY CALAMITY 517C  
**dam:** TTFL 11X 0924 BETH 1319  
 CKP ABOUT TIME 0924 {SOD}  
 CPH MISS TIMELINE 11X

|      |        |
|------|--------|
| CE   | 4.1    |
| BW   | 0.2    |
| WW   | 52     |
| YW   | 85     |
| MILK | 26     |
| M&G  | 53     |
| SC   | 0.7    |
| FAT  | -0.019 |
| REA  | 0.17   |
| MARB | 0.01   |
| BMI  | 391    |
| CHB  | 96     |

**BASE PRICE: \$4,500**  
**POLLED**

*Of all the fall bulls, K269 is the more moderate bull. His mother was 11 years old when she went town and she still had great feet! Dam age: 10.*

*EPD's top 3% fat, 9% Birth Weight, 24% Udder quality, 29% Teat size, 30% Baldie Maternal Index.*

**JMF 612D MESA 182C K273**

AHA # 44397593 DOB: 9-17-22 ACT. BW: 95 ADJ. WW: 786 S

**sire:** JMF 15X MESA 612D  
 FHF 4029 HICKOK 15X  
 FHF 9116 POLLY 66Z  
**dam:** FHF 2014 LYDA 182C  
 PYRAMID DOMINO 2014 {SOD}  
 FHF 9279 RENEE 82Z

|      |       |
|------|-------|
| CE   | 3.2   |
| BW   | 3.0   |
| WW   | 56    |
| YW   | 85    |
| MILK | 31    |
| M&G  | 59    |
| SC   | 1.2   |
| FAT  | 0.041 |
| REA  | 0.41  |
| MARB | 0.15  |
| BMI  | 372   |
| CHB  | 114   |

**BASE PRICE: \$4,500**  
**SCURRED**

*K273 really looks like his grandsire, Hickok 15X, when he was K273's age. His mother, 182C, is a big framed power cow. She is very deep, long, and thick. Dam age: 9.*

*EPD's top 7% Udder quality, 11% Teat size.*



Jaelyn during the heifer show at the county fair



**K273**



18-MO.-OLD



K274

JMF 612D MESA 198C **K274**

AHA # 44397594    DOB: 9-20-22    ACT. BW: 85    ADJ. WW: 767    P

}

**sire:** JMF 15X MESA 612D  
 FHF 4029 HICKOK 15X  
 FHF 9116 POLLY 66Z  
 FHF 9279 DEADWOOD 38Y {SOD}

}

**dam:** FHF 38Y RITA 198C  
 FHF 51M RITA 132T ET

|      |       |
|------|-------|
| CE   | 6.0   |
| BW   | 2.0   |
| WW   | 47    |
| YW   | 66    |
| MILK | 30    |
| M&G  | 53    |
| SC   | 1.2   |
| FAT  | 0.021 |
| REA  | 0.46  |
| MARB | 0.07  |
| BMI  | 394   |
| CHB  | 110   |

**BASE PRICE: \$4,500**  
**POLLED**

*I have always appreciated this bull for his correctness and for how conservatively marked he is. His Deadwood dam has a football sized patch of red on her face between her eyes. Dam age: 9.*

*EPD's top 11% Teat size, 19% Maternal Calving Ease, 24% Udder quality, 26% Calving Ease, 28% Baldie Maternal Index, 33% Birth Weight, 35% Milk.*



**THE BALD-FACED TRUTH**  
ABOUT HEREFORD GENETICS

It's obvious – Hereford-sired calves deliver a \$51 increase in net profit per cow, per year.\* Hereford genetics bring legendary hybrid vigor, improved fertility, feed efficiency and easy-handling docility to your program. Read the research, and see why Hereford heterosis pays off, at [Hereford.org/genetics](http://Hereford.org/genetics).



\*Compared to Angus-sired calves. Source: Daley, David A. and Earley, Sean P. Impacts of Crossbreeding on Profitability in Vertically Coordinated Beef Industry Marketing Systems. American Hereford Association. Retrieved from <https://hereford.org/wp-content/uploads/2017/02/HarrisHeterosisReport.pdf>. 57100-A02



198C, dam of K274, with her Red River 019H heifer this past fall. Our fall cows are all calved on pasture.





304L

## JMF 924G CATTLEMAN 051H 304L

AHA # 44489180    DOB: 1-1-23    ACT. BW: 62    ADJ. WW: 643    S

**sire:** TH RANGLINE 719T VICTOR 735D  
**JMF 35D COWBOY 148A 924G**  
 FHF 15X JUDI 148A  
 CF HAYES DOMINO 639  
**dam:** **JMF 639 MS. HAYES 94T 051H**  
 FHF 343 NATE'S LADY 94T



|      |       |
|------|-------|
| CE   | 7.7   |
| BW   | -0.3  |
| WW   | 37    |
| YW   | 55    |
| MILK | 23    |
| M&G  | 41    |
| SC   | 0.9   |
| FAT  | 0.001 |
| REA  | 0.14  |
| MARB | 0.13  |
| BMI  | 383   |
| CHB  | 102   |

### BASE PRICE: \$3,500 SCURRED

A nice heifer bull option in 304L. He is a very moderate, easy fleshing type that should leave beautiful daughters. His grandmother, Lady 94T, is one of our matriarch foundation females coming from Frederickson Ranch. Dam age: 4.  
**Candidate for heifers!**

EPD's top 6% Birth Weight, 11% Teat size, 16% Calving Ease, 24% Udder quality, 32% Maternal Calving Ease, 35% Baldie Maternal Index.



Lady 94T, granddam of 304L



306L

## JMF 019H RED RIVER 123J 306L

AHA # 44489182    DOB: 1-1-23    ACT. BW: 91    ADJ. WW: 837    P

**sire:** TH RANGLINE 719T VICTOR 735D  
**JMF 35D COWBOY 517C 019H**  
 JMF 15X LADY CALAMITY 517C  
 CF HAYES DOMINO 639  
**dam:** **JMF 639 MS. HAYES 406B 123J**  
 JMF 3027 POLLY 406B {DOD}

### BASE PRICE: \$3,500 HETERO POLLED

The saying "the picture doesn't do justice" is very applicable for 306L. He is as gentle as they come, so getting him excited for his picture was quite hard. His mother is a 639 first calf heifer, and in my opinion she did a great job with her first calf. Dam age: 3.

EPD's top 3% Maternal Calving Ease, 9% Calving Ease, 10% Birth Weight, 11% Teat size, 12% RibEye Area, 24% Udder quality.

|      |        |
|------|--------|
| CE   | 9.2    |
| BW   | 0.4    |
| WW   | 56     |
| YW   | 89     |
| MILK | 28     |
| M&G  | 56     |
| SC   | 1.0    |
| FAT  | -0.039 |
| REA  | 0.67   |
| MARB | -0.13  |
| BMI  | 306    |
| CHB  | 103    |



307L

## JMF 15X WILD BILL 030H 307L

AHA # 44489184    DOB: 1-1-23    ACT. BW: 85    ADJ. WW: 752    S

**sire:** THR THOR 4029 {CHB, SOD}  
**FHF 4029 HICKOK 15X**  
 FHF 10H VICTRA 31S {DOD}  
 PYRAMID SUNDANCE 7148  
**dam:** **JMF 7148 GILLETTE 136B 030H**  
 FHF 10Y VICTRA 136B

### BASE PRICE: \$3,500 SCURRED

307L's mother is a cherry red, goggle eyed with a gorgeous, tight, small teated udder. Dam age: 4.

EPD's top 7% Udder quality, 11% Teat size, 13% Scrotal Circumference, 26% Marbling, 29% Calving Ease and Maternal Calving Ease.

307L's dam, 030H, with her new Houston heifer calf



|      |       |
|------|-------|
| CE   | 5.7   |
| BW   | 2.8   |
| WW   | 59    |
| YW   | 87    |
| MILK | 29    |
| M&G  | 59    |
| SC   | 1.4   |
| FAT  | 0.011 |
| REA  | 0.46  |
| MARB | 0.20  |
| BMI  | 352   |
| CHB  | 121   |





309L

JMF



Dam of Distinction 128A, granddam of 309L



309L and his Hickok dam, 105J, on pasture in early June

## JMF 35D COWBOY 105J **309L**

AHA # 44489188    DOB: 1-9-23    ACT. BW: 84    ADJ. WW: 732    P

*sire:*

TH 122 711 VICTOR 719T {SOD}  
**TH RANGELINE 719T VICTOR 735D**  
 RANGELINE 327X VICTORIA 750B {DOD}

*dam:*

FHF 4029 HICKOK 15X  
**JMF 15X CALAMITY 128A 105J**  
 FHF X337 VICTRA 128A {DOD}



|      |       |
|------|-------|
| CE   | 8.9   |
| BW   | 1.1   |
| WW   | 47    |
| YW   | 76    |
| MILK | 29    |
| M&G  | 52    |
| SC   | 1.5   |
| FAT  | 0.051 |
| REA  | 0.18  |
| MARB | -0.08 |
| BMI  | 382   |
| CHB  | 67    |

### BASE PRICE: \$4,000 HOMO POLLED

One of our favorite bulls in the line up! We say it every year, but again want to express how we like our "signature mating" of a Cowman x Hickok. 309L's mother is a smooth made, tightly uddered 1st calf heifer. When 105J calved, she was very attentive. She acted more like a mature cow calving. She talked to her calf while she cleaned him off vigorously. 105J nudged the calf up and got him nursing right away. I mention these things because they don't make an EPD for it, and for us it coincides with our everyday cattleman logic of the cow doing her job well and unassisted. 309L's granddam, 128A, has paid for herself many times over. Good cow family to incorporate. Dam age: 3. **Candidate for heifers!**

EPD's top 7% Udder quality, 9% Scrotal Circumference, 11% Calving Ease and Teat size, 12% Maternal Calving Ease, 17% Birth Weight, 36% Baldie Maternal Index.

### WE EXPECT OUR COWS TO WORK FOR A LIVING.

They must be functional, maintenance free,  
 sound footed, and easy fleshing.

- Jared and Makayla Flower





311L

## JMF 664A DUKE 810F 311L

AHA # 44489190 DOB: 1-11-23 ACT. BW: 90 ADJ. WW: 709 P

**sire:** KILMORLIE DELIVERANCE ET 80U {SOD}  
**SQUARE-D COURIER 664A {SOD}**  
 SQ D S DOMINETTE 964M  
 TH RANGELINE 719T VICTOR 735D

**dam:** JMF 35D COWGIRL 89Z 810F  
 FHF 15X RITA 89Z

**BASE PRICE: \$3,500**  
**POLLED**

Old time pedigree in this "Duke" 664A son. Duke himself left us with so many beautiful daughter in the 1990's. I wanted to bring back something super functional, homo polled, and also proven outcross genetics. The 311L bull should add depth of rib and softness to his calves. Dam age: 5.



020H, maternal brother to 311L

|      |       |
|------|-------|
| CE   | 2.6   |
| BW   | 3.1   |
| WW   | 47    |
| YW   | 73    |
| MILK | 25    |
| M&G  | 49    |
| SC   | 0.7   |
| FAT  | 0.011 |
| REA  | 0.19  |
| MARB | 0.12  |
| BMI  | 358   |
| CHB  | 117   |

“ We made the switch to JMF bulls in 2021 and currently run only JMF Hereford bulls in our operation.

**WE KNOW THESE BULLS WILL WORK HARD, HOLD UP, AND BE EXACTLY WHAT WE EXPECTED THEM TO BE.**

Top notch animals and even better people is what we have come to find in working with JMF and the Flower family. Jared, Makayla, and the crew not only care about the bulls they put together, but have taken a genuine interest in our operation. We will continue to rely on JMF to move our herd forward as we look to make the best quality baldie replacement heifers possible. Thank you JMF.

- Adam, Colbie, and the crew at  
 B3 Cattle of Badger, MN

## JMF 35D COWBOY 41H 315L

AHA # 44489198 DOB: 1-14-23 ACT. BW: 90 ADJ. WW: 786 P

**sire:** TH 122 711 VICTOR 719T {SOD}  
**TH RANGELINE 719T VICTOR 735D**  
 RANGELINE 327X VICTORIA 750B {DOD}  
 H FHF KEYSTONE 6024 ET

**dam:** BAR 9 6024 POLLY 41H  
 BAR 9 322 POLLY 103D

**BASE PRICE: \$4,000**  
**HOMO POLLED**

Herd bull! 315L's mother, 41H, has brought in two top end bulls for her first two calves. 315L himself is deep, thick, and long made with the herd bull look! He has a large, red teardrop on his left eye. 315L was injured in early January so we were not able to picture him, but we were able to video him before the injury happened. Make sure to visit our website, [www.jmfherefords.com](http://www.jmfherefords.com), to see his video! We expect him to be healed by sale time and will guarantee him 100% sound. Dam age: 4.

EPD's top 3% Teat size, 22% Birth Weight, 24% Udder quality, 31% Calving Ease, 35% Maternal Calving Ease, 38 Baldie Maternal Index.

|      |       |
|------|-------|
| CE   | 5.4   |
| BW   | 1.4   |
| WW   | 46    |
| YW   | 69    |
| MILK | 27    |
| M&G  | 50    |
| SC   | 1.0   |
| FAT  | 0.031 |
| REA  | 0.37  |
| MARB | 0.13  |
| BMI  | 378   |
| CHB  | 92    |

## JMF 019H RED RIVER 4053 321L

AHA # 44489203 DOB: 1-16-23 ACT. BW: 86 ADJ. WW: 711 P

**sire:** TH RANGELINE 719T VICTOR 735D  
**JMF 35D COWBOY 517C 019H**  
 JMF 15X LADY CALAMITY 517C  
 GLENLEES 50S RINGER 68Y

**dam:** CKP CASHMERE 4053  
 HERITAGE CASHMERE 11157

**BASE PRICE: \$3,500**  
**POLLED**

Another good, solid bull by Red River 019H and out of the 4053 cow. 4053 has a neatly made, level, small teated udder. Good producing cow that is bigger framed at 1,650 lbs. Dam age: 10.

EPD's top 11% Teat size, 15% Birth Weight, 24% Udder quality.



Maternal brothers to 321L

|      |       |
|------|-------|
| CE   | 3.7   |
| BW   | 0.9   |
| WW   | 52    |
| YW   | 81    |
| MILK | 28    |
| M&G  | 54    |
| SC   | 1.1   |
| FAT  | 0.001 |
| REA  | 0.34  |
| MARB | 0.03  |
| BMI  | 357   |
| CHB  | 100   |



321L





130J "Tank" - sold on our 2022 sale, maternal brother to 337L

## JMF 35D COWBOY 901G 337L

AHA # 44489222    DOB: 2-8-23    ACT. BW: 87    ADJ. WW: 726    P

**sire:** TH 122 711 VICTOR 719T {SOD}  
**TH RANGELINE 719T VICTOR 735D**  
 RANGELINE 327X VICTORIA 750B {DOD}  
 JMF 15X FARADAY 718E

**dam:** JMF 718E POLLY'S CLOVER 901G  
 CKP CASHMERE 4053

|      |       |
|------|-------|
| CE   | 7.3   |
| BW   | 0.2   |
| WW   | 46    |
| YW   | 73    |
| MILK | 32    |
| M&G  | 55    |
| SC   | 1.4   |
| FAT  | 0.051 |
| REA  | 0.25  |
| MARB | 0.15  |
| BMI  | 401   |
| CHB  | 88    |

**BASE PRICE: \$4,000**  
**HOMO POLLED**

Moderate, attractive, thick made bull out of the Clover 901G cow. 337L's maternal brother was our high selling bull on the sale two years ago. The Clover cow is at the top end of our cowherd. Small teated, level, full udder with dark red feet. Dam age: 5.

EPD's top 9% Birth Weight, 13% Scrotal Circumference, 18% Calving Ease, 20% Milk, 25% Baldie Maternal Index.



Find us on Facebook!  
 @ JMF Herefords and SimAngus

scan here  
 for videos



"Clover" 901G, dam of 337L





**342L**



716E, dam of 342L



1224, granddam to 342L

## JMF 111J DROVER 716E **342L**

AHA # 44496074 DOB: 2-11-23 ACT. BW: 90 ADJ. WW: 658 S

**sire:** JMF 924G CATTLEMAN 939G 111J  
 JMF 612D MISS LILY 121A 939G  
 FHF 4029 HICKOK 15X  
**dam:** JMF 15X CALAMITY 1224 716E  
 TTFL MS VICTOR 719T TIME 1224

|      |       |
|------|-------|
| CE   | 4.8   |
| BW   | 1.3   |
| WW   | 51    |
| YW   | 76    |
| MILK | 27    |
| M&G  | 53    |
| SC   | 1.4   |
| FAT  | 0.011 |
| REA  | 0.23  |
| MARB | 0.10  |
| BMI  | 402   |
| CHB  | 102   |

**BASE PRICE: \$3,500  
SCURRED**

If you are looking to make moderate, deep, fleshy cattle - check out 342L! A big testicled bull that combines 121A and 148A cow families - both are cows that have played a lot of bills! Dam age: 7.

EPD's top 13% Scrotal Circumference, 20% Birth Weight, 25% Baldie Maternal Index, 36% Calving Ease.



111J, sold on our 2022 sale, maternal brother that we used in-herd at JMF



821A, granddam to 345L

## JMF 35D COWBOY 939G **345L**

AHA # 44489249 DOB: 2-11-23 ACT. BW: 74 ADJ. WW: 685 P

**sire:** TH 122 711 VICTOR 719T {SOD}  
 TH RANGELINE 719T VICTOR 735D  
 RANGELINE 327X VICTORIA 750B {DOD}  
 JMF 15X MESA 612D  
**dam:** JMF 612D MISS LILY 121A 939G  
 RANGELINE 13U MISS TUNDRA 821A



|      |       |
|------|-------|
| CE   | 12.2  |
| BW   | -1.1  |
| WW   | 40    |
| YW   | 63    |
| MILK | 26    |
| M&G  | 46    |
| SC   | 1.3   |
| FAT  | 0.021 |
| REA  | 0.18  |
| MARB | 0.07  |
| BMI  | 391   |
| CHB  | 98    |

**BASE PRICE: \$3,500  
POLLED**

A maternal brother to the Cattleman 111J bull. Smooth made, attractive bull. Dam age: 5. **Heifer bull candidate!**

EPD's top 3% Calving Ease and Birth Weight, 20% Scrotal Circumference, 30% Baldie Maternal Index.



**345L**





**365L**



030H, sold on our 2021 sale, maternal brother to 365L



748E, sold in 2017, maternal sister to 365L

## JMF 35D COWBOY 4097 **365L**

AHA # 44489272    DOB: 3-7-23    ACT. BW: 86    ADJ. WW: 678    P

**sire:** TH 122 71I VICTOR 719T {SOD}  
**TH RANGELINE 719T VICTOR 735D**  
 RANGELINE 327X VICTORIA 750B {DOD}  
 GLENLEES 50S RINGER 68Y

**dam:** CKP DIXIE 4097  
 CKP DIXIE 1030

|      |       |
|------|-------|
| CE   | 3.2   |
| BW   | 1.5   |
| WW   | 48    |
| YW   | 78    |
| MILK | 28    |
| M&G  | 52    |
| SC   | 1.1   |
| FAT  | 0.001 |
| REA  | 0.30  |
| MARB | 0.00  |
| BMI  | 361   |
| CHB  | 99    |

**BASE PRICE: \$3,500**  
**POLLED**

365L is out of one of two sisters we purchased from the Pelton program in North Dakota. Very good heavy milking cows that raise big calves year after year. The other sister is the dam of "Clover" 901G (337L's dam). I like the design of 365L with his sharp front end, deep rib, and big hip. Dam age: 10.

EPD's top 23% Birth Weight.



808F, dam of 366L



238K, high seller on our 2023 sale, maternal brother to 366L

## JMF 612D MESA 808F **366L**

AHA # 44489284    DOB: 3-7-23    ACT. BW: 84    ADJ. WW: 649    P

**sire:** FHF 4029 HICKOK 15X  
**JMF 15X MESA 612D**  
 FHF 9116 POLLY 66Z  
 TH RANGELINE 719T VICTOR 735D

**dam:** JMF 35D COWGIRL 201B 808F  
 FHF 9116 ACHIEVA 201B



|      |       |
|------|-------|
| CE   | 8.2   |
| BW   | 1.3   |
| WW   | 47    |
| YW   | 70    |
| MILK | 22    |
| M&G  | 46    |
| SC   | 1.6   |
| FAT  | 0.031 |
| REA  | 0.31  |
| MARB | 0.10  |
| BMI  | 388   |
| CHB  | 109   |

**BASE PRICE: \$3,500**  
**POLLED**

A maternal brother to our high selling bull in 2023. 366L is the calving ease, heifer bull candidate of the two. Still made similar in type and kind. Take note of a Calving Ease EPD of 8.2! Dam age: 6. **Heifer bull candidate!**

EPD's top 3% Teat size, 6% Scrotal Circumference, 7% Udder quality, 13% Calving Ease, 20% Birth Weight, 32% Baldie Maternal Index.



**366L**



110J, sold on our 2022 sale, maternal brother to 366L





368L



147A, dam of 368L



151J, sold on our 2022 sale, maternal brother to 368L

## JMF 35D COWBOY 147A 368L

AHA # 44489274 DOB: 3-8-23 ACT. BW: 79 ADJ. WW: 679 P

**sire:** TH 122 711 VICTOR 719T {SOD}  
**TH RANGELINE 719T VICTOR 735D**  
 RANGELINE 327X VICTORIA 750B {DOD}  
**dam:** FHF X337 VICTRA 147A  
 FHF 4029 VICTRA 37X



|      |       |
|------|-------|
| CE   | 6.3   |
| BW   | 0.8   |
| WW   | 44    |
| YW   | 71    |
| MILK | 27    |
| M&G  | 49    |
| SC   | 1.3   |
| FAT  | 0.011 |
| REA  | 0.18  |
| MARB | 0.18  |
| BMI  | 374   |
| CHB  | 111   |

**BASE PRICE: \$3,500**  
**POLLED**

Another Cowman son that is a candidate for heifers. His full sister is goggle eyed and a deep cherry red. His dam, 147A, does a really nice job. Dam age: 11.  
**Candidate for heifers!**

EPD's top 7% Udder quality, 12% Teat size, 14% Birth Weight, 19% Scrotal Circumference, 24% Calving Ease, 31% Marbling.



916G, sold on our 2020 sale, maternal brother to 372L



1212, dam of 372L

## JMF 612D MESA 1212 372L

AHA # 44489278 DOB: 3-13-23 ACT. BW: 83 ADJ. WW: 738 P

**sire:** FHF 4029 HICKOK 15X  
**JMF 15X MESA 612D**  
 FHF 9116 POLLY 66Z  
**dam:** CKP ABOUT TIME 0924 {SOD}  
**TTFL MS FED EX VALUE TIME 1212**  
 SPH CW 10F MS VALUE 5P



|      |       |
|------|-------|
| CE   | 4.8   |
| BW   | 1.2   |
| WW   | 50    |
| YW   | 71    |
| MILK | 27    |
| M&G  | 52    |
| SC   | 1.1   |
| FAT  | 0.011 |
| REA  | 0.35  |
| MARB | 0.04  |
| BMI  | 369   |
| CHB  | 99    |

**BASE PRICE: \$3,500**  
**POLLED**

The last calf of a 12-year-old cow. Conservatively marked, no white feather on his neck. He is not as high on his Calving Ease EPD as the rest of the heifer bull candidates, but he is made smooth and more refined for heifers. Dam age: 12.  
**Candidate for heifers!**

Top 19% Birth Weight, 24% Udder quality, 29% Teat size, 36% Calving Ease.



372L



# 18-MO.-OLD



**K278**



Jaelyn and Izzy



Grandpa Al and the boys running equipment!

## JMF 612D MESA 519C **K278**

ASA # 4116233    DOB: 9-24-22    ACT. BW: 84    ADJ. WW: 823    P

*sire:* FHF 4029 HICKOK 15X  
**JMF 15X MESA 612D**  
 FHF 9116 POLLY 66Z  
 TJ SHARPER IMAGE 809U  
*dam:* **CLRS CASHMERE 519 C**  
 ESS44

|      |        |
|------|--------|
| CE   | 11.4   |
| BW   | -0.4   |
| WW   | 58.2   |
| YW   | 87.0   |
| MILK | 18.0   |
| MCE  | 6.3    |
| YG   | -0.06  |
| MARB | 0.16   |
| BF   | -0.006 |
| REA  | 0.16   |
| API  | 99.0   |
| TI   | 62.1   |

**BASE PRICE: \$4,500**

**1/4 SIMMENTAL, 1/2 HEREFORD, 1/4 ANGUS - HETERO BLACK, HOMO POLLED**

*We really like the Hereford x SimAngus cross. We call them SimFords. It is a great way to put frame, mothering ability, disposition, and carcass together.*

*Dam age: 8.*

*EPD's top 10% Docility.*

## JMF B425 COLONEL 101J **302L**

ASA # 4241166    DOB: 1-1-23    ACT. BW: 90    ADJ. WW: 680    P

*sire:* CONNEALY CONFIDENCE 0100  
**BDAR CONFIDENCE B425**  
 BDAR BLACKCAP 225Z  
 HOOK'S BLACK HAWK 50B  
*dam:* **JMF 50B JAZZ'S DOVE 101J**  
 JMF 1127 JAZZ'S AUTHORITY 907G

|      |       |
|------|-------|
| CE   | 11.8  |
| BW   | -0.6  |
| WW   | 71.0  |
| YW   | 114.4 |
| MILK | 20.7  |
| MCE  | 7.3   |
| YG   | -0.05 |
| MARB | 0.3   |
| BF   | 0.02  |
| REA  | 0.73  |
| API  | 124.1 |
| TI   | 74.5  |

**BASE PRICE: \$3,500**

**3/8 SIMMENTAL, 5/8 ANGUS - HOMO BLACK, HOMO POLLED**

*Our pasture grass can get pretty course and/or low and wet. It takes a lot of rib shape and a moderate framed cow to convert all that poor forage from the swamps and rock here in west central Minnesota. 302L's dam hits the bell for being a deep ribbed, ultra moderate, super easy fleshing cow. She is the type you would want 100 of. 302L himself should sire the same type of females. He is ultra moderate, thick, and long. Dam age: 3.*



305A, great-granddam to 302L



Ty and Tate showing their calves at the county fair



**302L**





**316L**



505C, dam of 316L



"Cinnamon" S6030, granddam of 316L

## JMF 6175 CHISUM 505C **316L**

ASA # 4241155    DOB: 1-14-23    ACT. BW: 88    ADJ. WW: 803    P

*sire:* **S CHISUM 6175**

S ALLIANCE 3313

S GLORIA 464

MCM TOP GRADE 018X

*dam:* **JMF LEANNAS GRADE 505C**

COTT/GFI LEANNA S6030

**BASE PRICE: \$4,000**

**1/2 SIMMENTAL, 1/2 ANGUS - HETERO BLACK, HOMO POLLED**

*I can't say enough good about the proved cow family behind 316L. His grandmother, "Cinnamon" S6030, is our foundation female to our Sim program and was 15 years old when she went to town. Her daughters are all high performing cows that are heavy milkers and wean big, soggy calves. Chisum worked well on these cows. 347L is also from the "Cinnamon" S6030 cow family. Dam age: 9.*

*EPD's top 15% Milk and Maternal Calving Ease.*

|      |        |
|------|--------|
| CE   | 12.1   |
| BW   | -0.6   |
| WW   | 75.7   |
| YW   | 116.4  |
| MILK | 29.5   |
| MCE  | 9.5    |
| YG   | -0.07  |
| MARB | 0.3    |
| BF   | -0.015 |
| REA  | 0.64   |
| API  | 115.5  |
| TI   | 79.5   |

## JMF 7301 PIONEER 902G **320L**

ASA # 4241159    DOB: 1-15-23    ACT. BW: 87    ADJ. WW: 710    P

*sire:* **S A V PIONEER 7301**

S A V FINAL ANSWER 0035

S A V BLACKBIRD 5297

ES AUTHORITY EA117-2

*dam:* **JMF 1127 MISS AUTHORITY 902G**

JRA NEW UPGRADE 412B

**BASE PRICE: \$3,500**

**1/2 SIMMENTAL, 1/2 ANGUS - HETERO BLACK, HOMO POLLED**

*Half bald faced bull out of a really cowy Authority daughter. Dam age: 5.*

|      |        |
|------|--------|
| CE   | 10.8   |
| BW   | 0.6    |
| WW   | 70.7   |
| YW   | 114.0  |
| MILK | 24.3   |
| MCE  | 4.8    |
| YG   | -0.19  |
| MARB | 0.19   |
| BF   | -0.015 |
| REA  | 0.75   |
| API  | 119.3  |
| TI   | 72.5   |



412B, granddam of 320L



320L with his dam, 902G, on summer pasture in early June



**320L**





327L



203K, sold in our 2023 bull sale, maternal brother to 327L



109J, sold in our 2022 bull sale, maternal brother to 327L

## JMF 50B BLACK HAWK 954G 327L

ASA # 4241164    DOB: 1-18-23    ACT. BW: 85    ADJ. WW: 757    P

*sire:* HOOK'S XAVIER 14X  
**HOOK'S BLACK HAWK 50B**  
 HOOK'S YVETTE 100Y  
 JMF 15X MESA 612D

*dam:* **JMF 612D LILYS HONOR 421B 954G**  
 JRA HONOR ROLL 421B

|      |        |
|------|--------|
| CE   | 13.1   |
| BW   | -0.6   |
| WW   | 75.9   |
| YW   | 116.5  |
| MILK | 25.1   |
| MCE  | 6.1    |
| YG   | -0.3   |
| MARB | 0.19   |
| BF   | -0.033 |
| REA  | 0.99   |
| API  | 126.4  |
| TI   | 77.8   |

**BASE PRICE: \$3,500**

**5/8 SIMMENTAL, 1/4 HEREFORD, 1/8 ANGUS - HETERO BLACK, HOMO POLLED**

Another "SimFord" (Simmental x Hereford) bull, his full brother sold a couple years back and did very well. All of our SimFord bulls have been very quiet and easy to work with. His dam, 954G, has consistently weaned off one of our heaviest calves. Dam age: 5.

EPD's top 4% Docility, 15% RibEye Area, 35% Birth Weight.

## JMF 50B BLACK HAWK 806F 328L

ASA # 4241158    DOB: 1-19-23    ACT. BW: 75    ADJ. WW: 653    P

*sire:* HOOK'S XAVIER 14X  
**HOOK'S BLACK HAWK 50B**  
 HOOK'S YVETTE 100Y  
 JSS UNITED C501

*dam:* **JMF JASMINE Y145 806F**  
 GLS MISS PACE Y145



|      |        |
|------|--------|
| CE   | 16.2   |
| BW   | -3.0   |
| WW   | 72.0   |
| YW   | 109.9  |
| MILK | 24.3   |
| MCE  | 7.9    |
| YG   | -0.33  |
| MARB | 0.11   |
| BF   | -0.039 |
| REA  | 1.11   |
| API  | 134.7  |
| TI   | 76.6   |

**BASE PRICE: \$3,500**

**3/4 SIMMENTAL, 1/4 ANGUS - HOMO BLACK, HOMO POLLED**

Very quiet bull from the Jasmine Y145 cow family. Nice udders and lighter birth weight cow family. Dam age: 5. **Candidate for heifers!**

EPD's top 5% RibEye Area, 10% Birth Weight, 15% Caving Ease.



"Jasmine" Y145, granddam of 328L



Another "do-it-yourself" project by Jared!



328L





333L

## JMF 6175 CHISUM 717E 333L

ASA # 4241156    DOB: 2-5-23    ACT. BW: 85    ADJ. WW: 724    P

Sire: **S CHISUM 6175**  
 S ALLIANCE 3313  
 S GLORIA 464  
 JSS UNITED C501  
 Dam: **JMF MISS UNITED 717E**  
 JRA NEW UPGRADE 412B

|      |        |
|------|--------|
| CE   | 9.4    |
| BW   | 1.5    |
| WW   | 79.6   |
| YW   | 124.5  |
| MILK | 19.1   |
| MCE  | 7.6    |
| YG   | -0.01  |
| MARB | 0.21   |
| BF   | -0.003 |
| REA  | 0.51   |
| API  | 98.2   |
| TI   | 74.0   |

**BASE PRICE: \$3,500**

**3/8 SIMMENTAL, 5/8 ANGUS - HOMO BLACK, HOMO POLLED**

Twin to bull 334L on this sale. 333L has always caught our eye for his depth of rib and muscle expression. Very good on disposition. Dam age: 6.



Find us on Facebook!  
@ JMF Herefords and SimAngus



717E, dam of 333L and 334L, pictured as a 2nd calver



412B, granddam of 333L and 334L



The kids have been enjoying our newest cow hand, Kip!



# JMF 6175 CHISUM 717E 334L

ASA # 4241169    DOB: 2-5-23    ACT. BW: 60    ADJ. WW: 666    P

**sire:** S ALLIANCE 3313  
**S CHISUM 6175**  
 S GLORIA 464  
 JSS UNITED C501  
**dam:** JMF MISS UNITED 717E  
 JRA NEW UPGRADE 412B

|      |        |
|------|--------|
| CE   | 9.4    |
| BW   | 1.5    |
| WW   | 79.6   |
| YW   | 124.5  |
| MILK | 19.1   |
| MCE  | 7.6    |
| YG   | -0.01  |
| MARB | 0.21   |
| BF   | -0.003 |
| REA  | 0.51   |
| API  | 98.2   |
| TI   | 74.0   |

**BASE PRICE: \$3,500**  
**3/8 SIMMENTAL, 5/8 ANGUS - HOMO BLACK, HOMO POLLED**  
 Twin brother to 333L. All black. He is also great for disposition. Dam age: 6.



334L

# JMF 6175 CHISUM 907G 347L

ASA # 4241157    DOB: 2-13-23    ACT. BW: 95    ADJ. WW: 771    P

**sire:** S ALLIANCE 3313  
**S CHISUM 6175**  
 S GLORIA 464  
 ES AUTHORITY EA117-2  
**dam:** JMF 1127 JAZZ'S AUTHORITY 907G  
 JMF LEANNAS JAZZ 305A

|      |       |
|------|-------|
| CE   | 9.2   |
| BW   | 1.3   |
| WW   | 78.1  |
| YW   | 122.6 |
| MILK | 23.5  |
| MCE  | 6.5   |
| YG   | 0.0   |
| MARB | 0.17  |
| BF   | 0.003 |
| REA  | 0.59  |
| API  | 95.5  |
| TI   | 72.9  |

**BASE PRICE: \$4,000**  
**3/8 SIMMENTAL, 5/8 ANGUS - HOMO BLACK, HOMO POLLED**  
 A hulk of a bull! Wide based, thick muscled bull that is pure power.  
 Most powerful Chisum son in my opinion.  
 Dam age: 5.



305A, granddam to both 347L and 350L



347L

for videos on the entire offering, visit:  
[WWW.JMFHEREFORDS.COM](http://WWW.JMFHEREFORDS.COM)

# JMF J311 GOSPEL 002H 350L

ASA # 4241170    DOB: 2-15-23    ACT. BW: 60    ADJ. WW: 592    P

**sire:** HOOK'S GOSPEL 96G  
**KBHR MR GOSPEL J311**  
 KBHR E043  
 CCR BOULDER 1339A  
**dam:** JMF 1339A JAZZ'S BOULDER 002H  
 JMF LEANNAS JAZZ 305A



|      |        |
|------|--------|
| CE   | 14.0   |
| BW   | -1.6   |
| WW   | 71.7   |
| YW   | 111.5  |
| MILK | 24.0   |
| MCE  | 7.6    |
| YG   | -0.28  |
| MARB | 0.45   |
| BF   | -0.049 |
| REA  | 0.73   |
| API  | 145.0  |
| TI   | 82.9   |

**BASE PRICE: \$3,500**  
**3/4 SIMMENTAL, 1/4 ANGUS - HETERO BLACK, HOMO POLLED**  
 Smaller framed heifer bull out of the Jasmine Y145 cow family. Very quiet, easy going bull that won't get too big for heifers. Twin to bull. Dam age: 4.  
**Candidate for heifers!**

EPD's top 3% docility, 20% Birth Weight, 30% All-Purpose Index, 35% Calving Ease.



350L





Jared and Makayla Flower Family  
1530 10th St. NW  
Holloway, MN 56249

**FIRST CLASS MAIL, TIME DATED MATERIAL!**

**342L** Cattleman x Hickok  
AHA 44496074 • BW: 90 • Adj. 205: 658



*Join us for our...*

**10<sup>th</sup>** ANNUAL

*Bull Sale*

1:00 PM

**FEBRUARY 3, 2024**

*At the west farm near Holloway, MN*

*Chili & Biscuits at Noon!*



*Offering:* **30** Polled Hereford, Simmental, and SimAngus  
Yearling, 18-Month-Old and 2-Year-Old Bulls



**18-MONTH-OLD**  
Mesa x Deadwood  
AHA 44397594 • BW: 85 • Adj. 205: 767



Cowman x Hickok  
AHA 44489222 • BW: 87 • Adj. 205: 726  
Homo polled



Chisum x Top Grade  
ASA 4241155 • BW: 88 • Adj. 205: 803



Cowman x Hickok  
AHA 44489188 • BW: 84 • Adj. 205: 732  
Homo polled

*for videos on the complete offering, visit:*

**WWW.JMFHEREFORDS.COM**